



creek-link

Simple - Easy - Fun

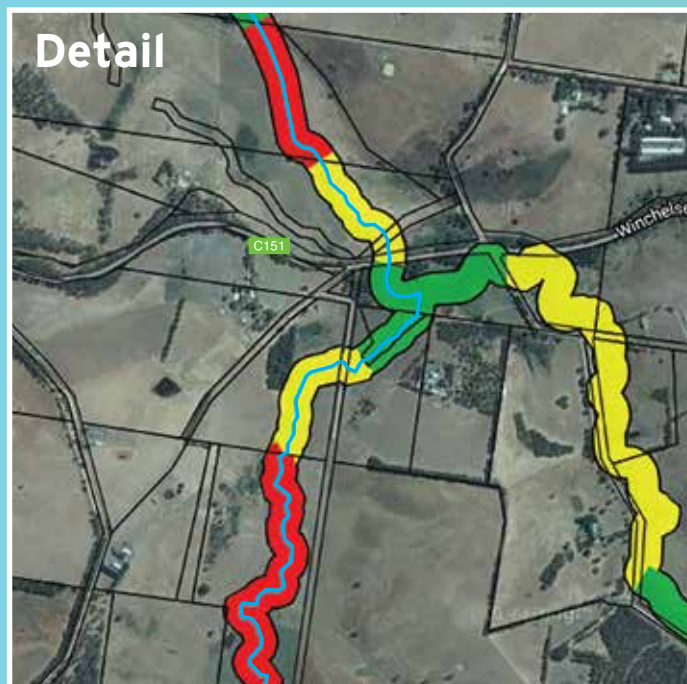
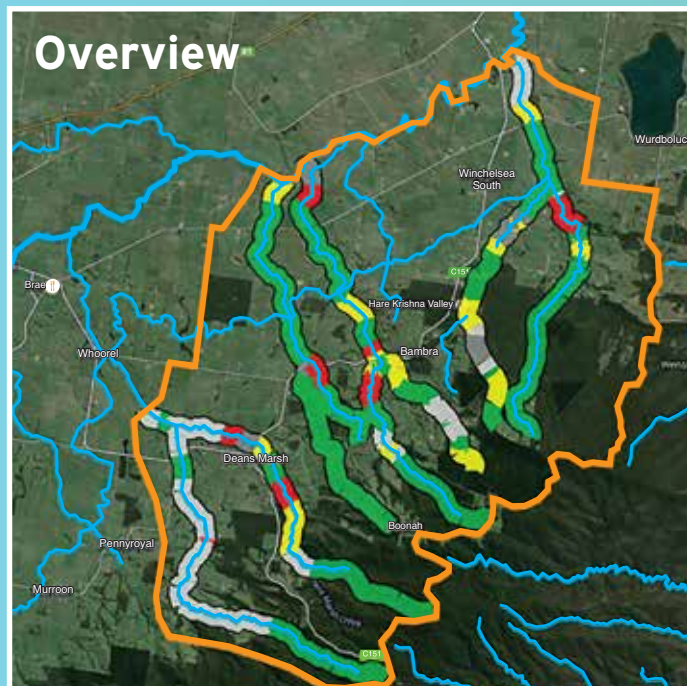
Creek-link is a simple online mapping tool which enables local environmental groups, like Landcare, to map the condition of their waterways

www.creeklink.org.au



How does it work?:

Creek-link provides free online maps to interested local environmental groups. The groups then use their map to show; where stock have been excluded from the waterways, where there is significant native vegetation along the waterways and where landholders are interested in improving their section of waterway.



Benefits of using Creek-link:

Mapping key information about your local waterways will help groups:

- Record the location of their past projects for future generations
- Identify the best locations for future projects
- Communicate more effectively with the broader community
- Write more compelling, and quicker!, funding applications
- Celebrate the success of all their hard work


How do groups add their data?


Initially groups are provided with a poster sized paper map of their local group area. Members of the group then use a range of 4 different coloured Textas to "colour in" their map, with each different colour representing a different type of waterway condition.


Once the information has been added to the paper map a single member of the group or network who is comfortable using a computer is provided with a password so that they can add the information to the groups map on the internet.


Legend


 **Landcare boundary**

 **Unknown** (Information has yet to be collected about this site)

 **Good condition** (Stock have been excluded and over 80% of the vegetation is native)

 **Half way there** (Either stock have been excluded **or** over 80% of the vegetation is native)

 **Requires work** (Stock still have access and there is less than 80% of the vegetation is native)

 **Supportive landholder**
(The landholder wants to improve their waterway)



creek-link

The History of Creek-link

The Creek-link project began in 2010 in a local Landcare group located in South Western Victoria. At the time the group was interested in permanently recording the many projects it had undertaken over the previous 20 years.

The group was also interested in focusing future waterway projects on linking and extending existing areas of good quality waterway. As this information did not already exist in adequate detail the idea for Creek-link was born.

Who Runs Creek-link?

Creek-link is a not-for-profit Incorporated Association run by a volunteer Committee of Management.

While the Committee has a wide range of experience in managing both not-for-profit organizations and private businesses, the members share a common passion in helping improve the health of Victoria's waterways.

Get your own map!

If your network or group would like their own Creek-link map it couldn't be easier. The first step is to simply go to the website;

creeklink.org.au Click on the big green star in the top right hand corner of the screen and fill in your groups details.

Once Creek-link knows how many new groups would like a map of their own, Creek-link will be seeking funding to enable the creation and support of the new maps that have been requested.

**This brochure is funded with support from
the Department of Environment, Land,
Water and Planning**